



Cooking - Max Cook - Griddle ranges  
**Model AER-G24-24 H NG**

Model : \_\_\_\_\_  
Name : \_\_\_\_\_  
Project Name : \_\_\_\_\_  
Project Area : \_\_\_\_\_  
Project Item : \_\_\_\_\_



Cooking - Max Cook - Griddle ranges

**Model: AER-G24-24 H NG**

Reference	19031963
-----------	----------

### General characteristics

#### GRIDDLE RANGES - MANUALLY CONTROLLED

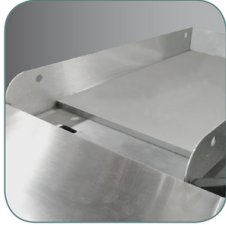
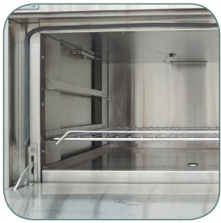
- Heavy-duty gas griddle ranges designed for American market, offer high-energy performance, outstanding power, durability and reliability. Ensure fast cooking for any busy kitchen.
- Stylish and modular design, perfect within a line up or as a full power stand alone, allows you to put the right operation in the right place for optimized workflow.
- Stainless steel internal and external construction: front, sides, landing ledge, valve control panel and kick plate.
- Easy to clean thanks to careful design.
- Smooth griddle plate with an oven underneath.
- Removable instrument panel for perfect access and easy maintenance.
- Heavy gauge welded front frame.
- Stainless steel tubular 6" legs with height-adjustable legs.
- Safety valve pilot and burners, CSA and ANSI certified.
- Heavy-duty reinforced control knobs.
- Push-button piezo ignition.
- One pilot for each burner for instant ignition.

#### GRIDDLE FEATURES:

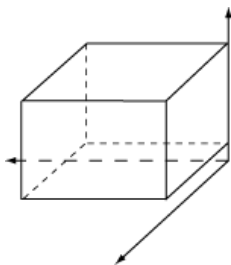
- Powerful burners type "U" rated at 23,000 BTU/hr., located every 12" for even heat distribution.
- Highly polished steel griddle plates in 3/4" thicknesses.
- Stainless steel grease drawer.

#### STANDARD OVEN FEATURES:

- Stainless steel construction: sides, rear, deck and door.
- Thermostat control from 212 °F – 572 °F (100 °C - 300 °C).
- Matchless push button (piezo) ignition to light the oven pilot.
- Burner with safety valve pilot, CSA and ANSI certified.
- Insulated oven cavity has two chrome rack with adjustable positions.
- Heavy-duty easy remove heavy wire chrome rack supports.



PRODUCT SPECIFICATIONS	
Gross Depth (mm):	685
Gross High (mm):	1000
Gross weight (kg):	1
Gross Width (mm):	925
Net Depth (mm):	813
Net High (mm):	950
Net Width (mm):	610



Packaging dimensions:  
 Height: 1000 MM  
 Depth: 685 MM  
 Width: 925 MM  
 Gross weight: 1 KG