



Cooking - Max Cook - Broilers - Radiant broiler
Model AERB-12 NG

Model : _____
Name : _____
Project Name : _____
Project Area : _____
Project Item : _____



Cooking - Max Cook - Broilers - Radiant broiler

Model: AERB-12 NG

Reference	19031981
-----------	----------

General characteristics

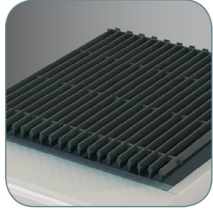
- Heavy-duty radiant gas broilers designed for American market, offer high-energy performance, outstanding power, performance, durability and reliability. Ensure fast cooking for any busy kitchen.
- Stainless steel construction: front, sides, landing ledge and valve control panel.
- Safety valve pilot and burners, CSA and ANSI certified.

STANDARD FEATURES:

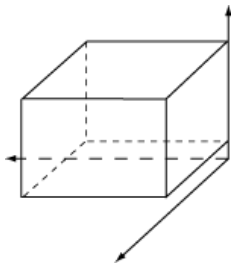
- Individually controlled steel "Flute" burners at 16,000 BTU/hr. each one, spaced every 6" for even heat distribution and optimal productivity (AERB-12 model equipped with a single burner).
- Internal baffle system - reinforced cast iron baffles located above the burners, developed to prevent direct contact of the flame with food, thus achieving a perfect roast.
- Heavy-duty, cast iron grates can be individually positioned (flat or slanted) and reversible to accommodate a variety of broiling needs.
- One stainless steel standing pilot for each burner for instant ignition.
- Safety valve pilot and burners, CSA and ANSI certified.
- Optimum heat distribution with heavy duty angled radiants.
- Heavy duty reversible cast iron top grates.
- Removable drip tray, large capacity, removable for easy cleaning.

OPTIONAL ITEMS

- Stainless steel stands with height-adjustable legs.
- 4" legs.



PRODUCT SPECIFICATIONS	
Gross Depth (mm):	375
Gross High (mm):	470
Gross weight (kg):	1
Gross Width (mm):	920
Net Depth (mm):	813
Net High (mm):	350
Net Width (mm):	305



Packaging dimensions:
 Height: 470 MM
 Depth: 375 MM
 Width: 920 MM
 Gross weight: 1 KG