

Direct Draw

BEER COOLERS



A proper Direct Draw Refrigerator not only provides "Ice Cold" temperatures inside your unit but maintains the same temperature throughout the towers. **Asber's distinct forced airflow** design provides the towers with consistent temperature; ensuring your products is dispensed at the optimal temperature.

As bar layouts are becoming increasingly smaller, refrigeration airflow is crucial to the success and operation of your unit. All Asber's bar Refrigerators are **fully front breathing** enabling them to be placed in the most compact environments for a seamless fit. **Complete side-mount refrigeration system** allows for full access to your products without the impedance of a roof mount evaporator giving you a worry-free operating environment.

Black vinyl is the preferred finish for Bar Equipment as its more durable and doesn't chip versus a painted finish. Asber's Bar Refrigerators come with a chip resistant black vinyl exterior finish front, sides and back. Interior walls with NSF approved white coated steel finish to enhance its merchantability, easy to clean with a sturdy stainless-steel floor. Always one step above to ensure the utmost in safety and sanitation for your establishment.

Insulation in any Refrigerator is one of the most important factors for thermal efficiency. Asber only uses the **world's leader Ecomate (GWP) (ODP) insulation, 2" thick** for the highest R value efficiency for your environments.

With innovative and eco-friendly technology, Asber utilizes **R-290 Hydrocarbon** designed to meet DOE's Energy Conservation standards with very low contribution to global warming (ODP-0) (GWP-3).

Additional features to include:

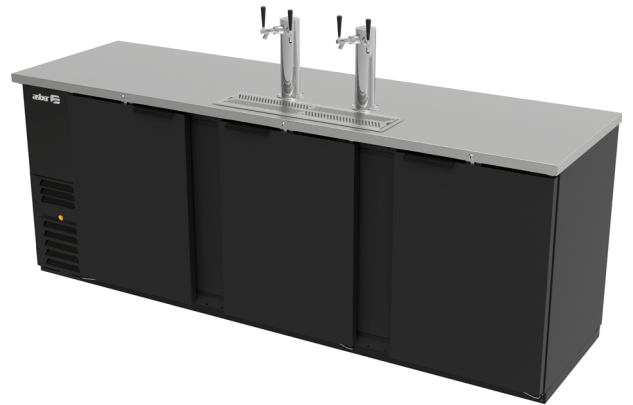
- Hermetic compressors with epoxy coated evaporator.
- Automatic evaporator: Paper fins not utilized in the evaporation process.
- Electronic controller.
- LED interior lights.
- Cutouts for CO2 connection.
- Stainless steel door trim.
- Temperature: Refrigerators 32°F to 38°F based on an external environment of 90°F and 65% RH.
- Door locks with universal key.
- Meets the NSF-7 standard for food safety.
- ADDC-23 model comes standard on castors / Single tap tower.



ADD-23



ADD-58



ADD-94

OPTIONS & ACCESORIES

- Additional 2nd year warranty.
- Low profile castor rails (increase overall height by 1/2").
- Dunnage shelves for floor.
- Voltage: 220V. - I - 50Hz.
- Additional single or double draft towers.
- Additional epoxy coated shelves.
- 6" adjustable stainless-steel legs.



MODEL	DOORS	KEGS	TOWERS	TAPS	AMPS	HP	VOLTS	DIMENSIONS			SHIPPING WEIGHT (lbs)
								Width	Depth	Height ¹	
ADD-23	1	1	1	1	1.5	1/10	115/60	24 1/4"	31 1/8"	36 3/4"	165
ADD-58	2	3	2	3	3.0	1/3	115/60	59 1/2"	28 5/8"	36 7/8"	314
ADD-68	2	3	2	3	3.0	1/3	115/60	69 1/2"	28 5/8"	36 7/8"	370
ADD-78	3	4	2	4	3.0	1/3	115/60	80"	28 5/8"	36 7/8"	396
ADD-94	3	5	2	4	3.0	1/3	115/60	95 1/2"	28 5/8"	36 7/8"	409

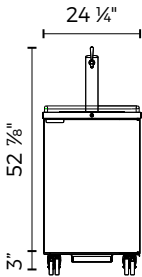
1. Height does not include towers. 2. Height does not include 2.5" castors. 3. Specifications are subject to change without prior notice.

Direct Draw

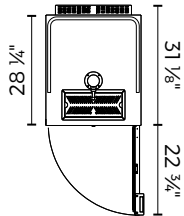
BEER COOLERS



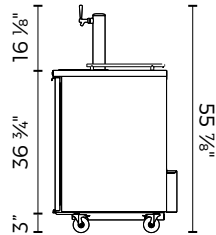
ADDC-23 FRONT



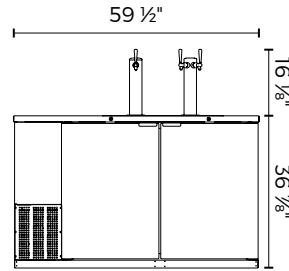
ADDC-23 TOP



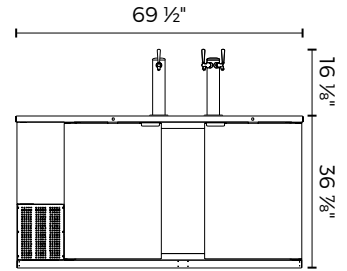
ADDC-23 SIDE



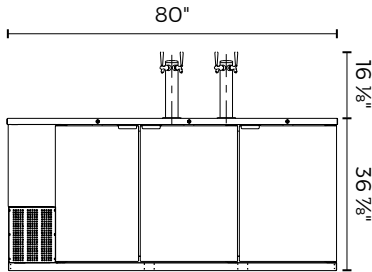
ADDC-58 FRONT



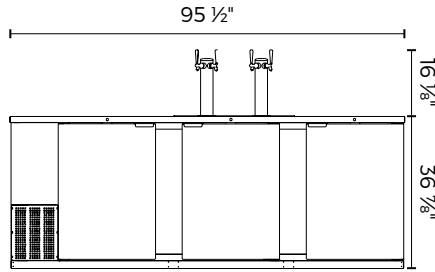
ADDC-68 FRONT



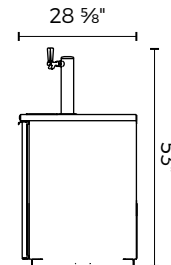
ADDC-78 FRONT



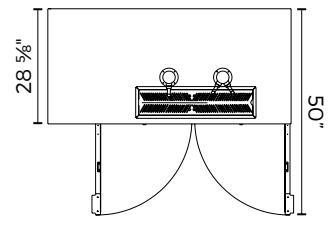
ADDC-94 FRONT



SIDE VIEW
58", 68", 78", 94"



TOP VIEW
58", 68", 78", 94"



ELECTRICAL DATA	23"	58"	68"	78"	94"
Voltage	115/60				
Plug Type	Nema 5-15P				
Full Amp. Loads	1.5	3.0			
Compressor HP	1/10	1/3			
Cord Length (ft)	10				
Refrigerant	R-290				
DIMENSIONAL DATA					
# of Doors	1	2		3	
Ext. Width Overall	24 1/4"	59 1/2"	69 1/2"	80"	95 1/2"
Ext. Depth Overall	31 1/8"	28 5/8"			
Ext. Height Overall	36 3/4"	36 7/8"			
Int. Width Overall	22 1/2"	44 5/8"	54 5/8"	65"	80 1/2"
Int. Depth Overall	23 1/4"	23 1/4"			
Int. Height Overall	30 7/8"	31 3/4"			
# of Kegs (980 oz.)	1	3		4	5
# of Towers	1	2			
# of Taps	1	3		4	
Shipping Weight (lbs.)	165	314	370	396	409

1. Height does not include towers.
 2. Height does not include 2.5" castors (23" models).
 3. Specifications are subject to change without prior notice.

Standard Features

- 2" Ecomate CFC Free foam in place insulation.
- Electronic controller with digital display.
- Self-contained Refrigeration with epoxy coated evaporator.
- Stainless steel door trim.
- Door locks with universal key.
- ADDC-23 model comes standard on castors / Single tap tower.

Options & Accesories Warranty

- Additional 2nd year warranty.
- Low profile castor rails (Increase overall height by 1/2").
- Dunnage shelves for floor.
- Voltage: 220V. – 1 – 50 hz.
- Additional single or Double draft towers.
- 6" adjustable stainless-steel legs.

- 1-year parts & labor.
- 5-year compressor.

*RESIDENTIAL APPLICATIONS: Asber assumes no liability for parts or labor coverage for component failure, factory defect or any other damages for units installed in non-commercial foodservice or residential applications.