



America

www.BakeMax.com

Project: _____

Item: _____

Qty: _____ Date: _____

BakeMax America BAS Series Oven Range



BAS360

The BakeMax America BAS Series Oven Range are designed to provide the ultimate in performance and durability. Allowing you to roast and cook a wide range of meals, with efficiency, convenience at an affordable price.

Features:

RANGE

- Available in 24", 36" and 60" width.
- Stainless Steel Panel and Sides
- 12" x 12" cast iron top grates designed for easy movement of pots across top sections.
- Deflectors to direct waste to crumb/drip pan.
- Large front panel, promoting safety and functionality.
- Black paint injected aluminum knobs providing for better toughness and durability.
- Easily removable stainless steel crumb/drip pan.
- One year parts and labor warranty.

OVEN

- Oven with snap action thermostat from 210°F to 550°F and 100% safety shut off.
- 26.5" Standard Bakery depth on all ovens.
- Double-sided enamel oven cavity
- Heavy-duty oven wired rack – 1/8" diameter
- The standard oven has 3 shelf positions and 1 rack.
- Counterweight balanced doors.
- One year parts and labor warranty.

Options & Accessories:

- Modular belly rail accessory for 1/6 pans 24", 36"
- Cutting Board 24", 36"
- 6" swivel casters with front locking brakes
- Additional Oven Rack
- Quick Disconnect
- Stub Black Flue Riser 4"





Cast Iron Grate

** Due to continuous product improvement, specifications are subject to change without notice.

BakeMax® / Titan Ventures International Inc.

Warehouses:

270 Baig Blvd, Suite A3, Moncton, NB E1E1C8 
1605 Crescent Cr Carrollton, TX, Dallas, TX 75006 

Toll Free: 1-800-565-BAKE (2253)

Phone: 506-858-8990

Fax: 506-859-6929

Email: Sales@BakeMax.com

BakeMax America BAS Series Oven Range

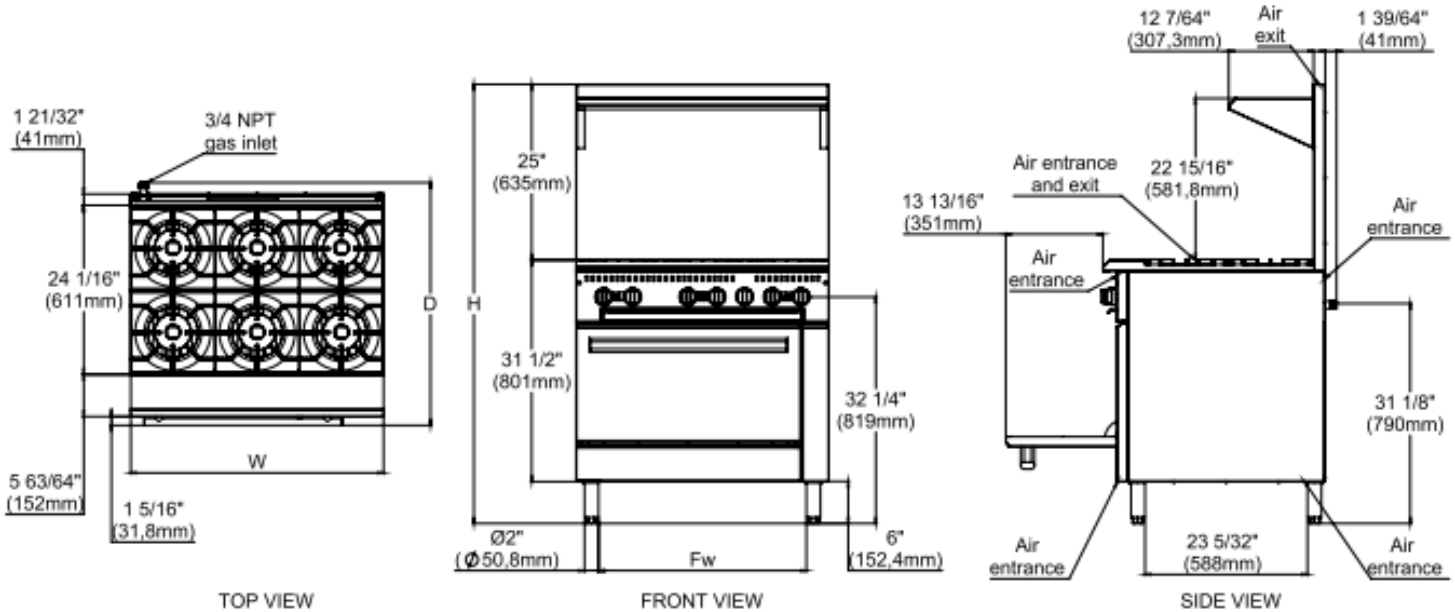
Technical Specifications & Drawings

Model	Width	Depth	Height	Burners	BTU NG	BTU LP
BAS24O	24"	35"	62"	4	100,000	100,000
BAS36O	36"	35"	62"	6	150,000	150,000
BAS60O	60"	35"	62"	10	250,000	250,000

***Warning:** The minimum supply pressure on this appliance must be set at 4 water column inches for natural gas and 10 water column for propane gas. Each unit has a 3/4" gas connect at the rear of the appliance.



Shipping Information

Model	Net Weight lbs/kg	Crated Weight lbs/kg	Crate Dimensions (D x W x H)
BAS24O	276lbs/125kg	397lbs/180kg	39"X29"X46"
BAS36O	386lbs/175kg	529lbs/240kg	39"X48"X46"
BAS60O	662lbs/300kg	1085lbs/492kg	39"X65"X46"



BakeMax[®] / Titan Ventures International Inc.

Warehouses:

270 Baig Blvd, Suite A3, Moncton, NB E1E1C8 
 1605 Crescent Cr Carrollton, TX, Dallas, TX 75006 

Toll Free: 1-800-565-BAKE (2253)

Phone: 506-858-8990

Fax: 506- 859-6929

Email: Sales@BakeMax.com